

Cofimvaba: Innovative and Systemic Technology Application in Rural, Education Focused, Agri-based development initiatives

4th Biennial Conference



Presented by: Johann (Rensie) van Rensburg

Date: 9 October 2012

Why Development **Fails**

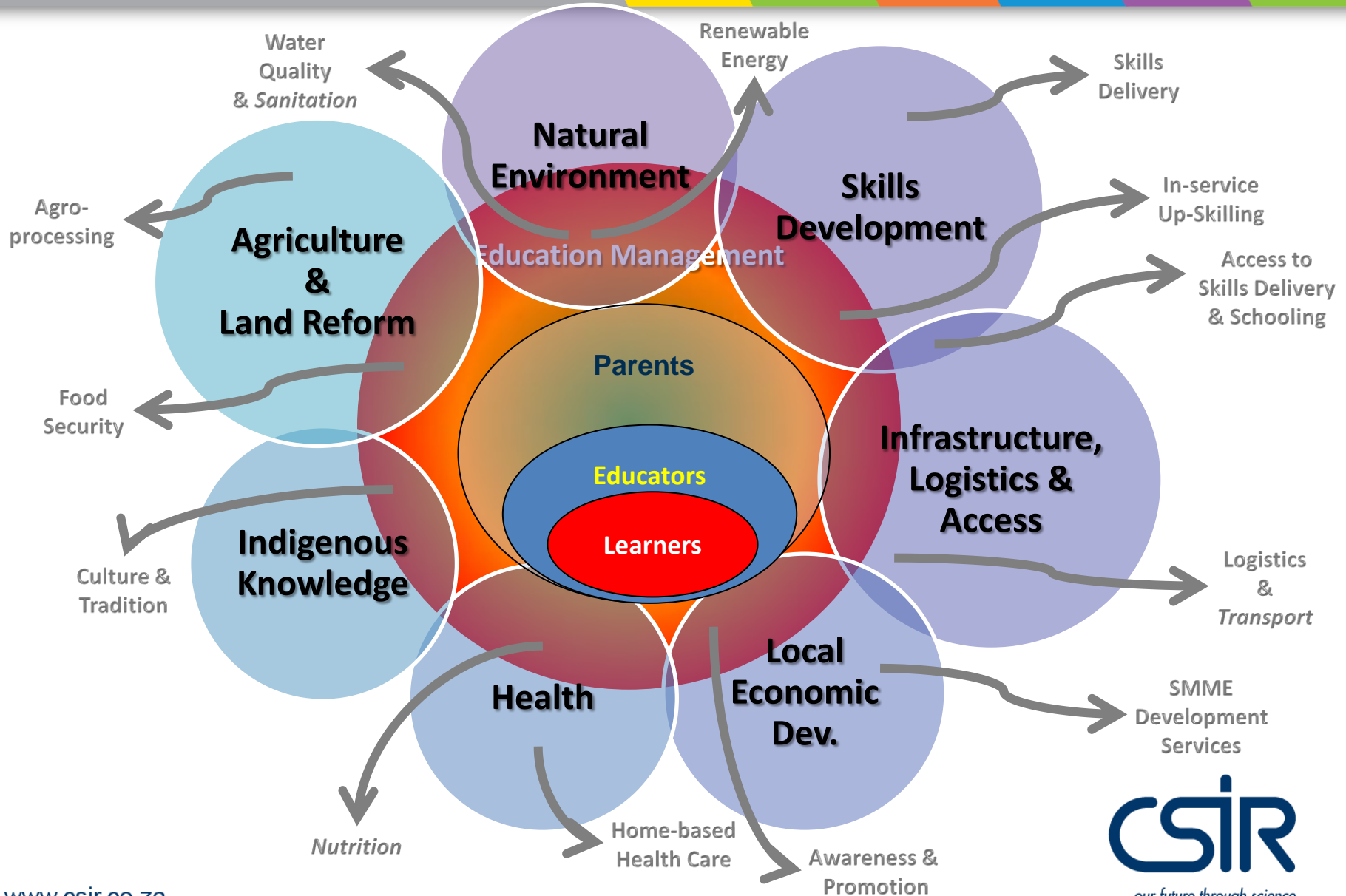
1. Why do development projects in general fail?

- “One-eyed” approaches;
- Non-strategic approaches;
- Lack of anchorage in local contexts; and
- No scalability and replicability.

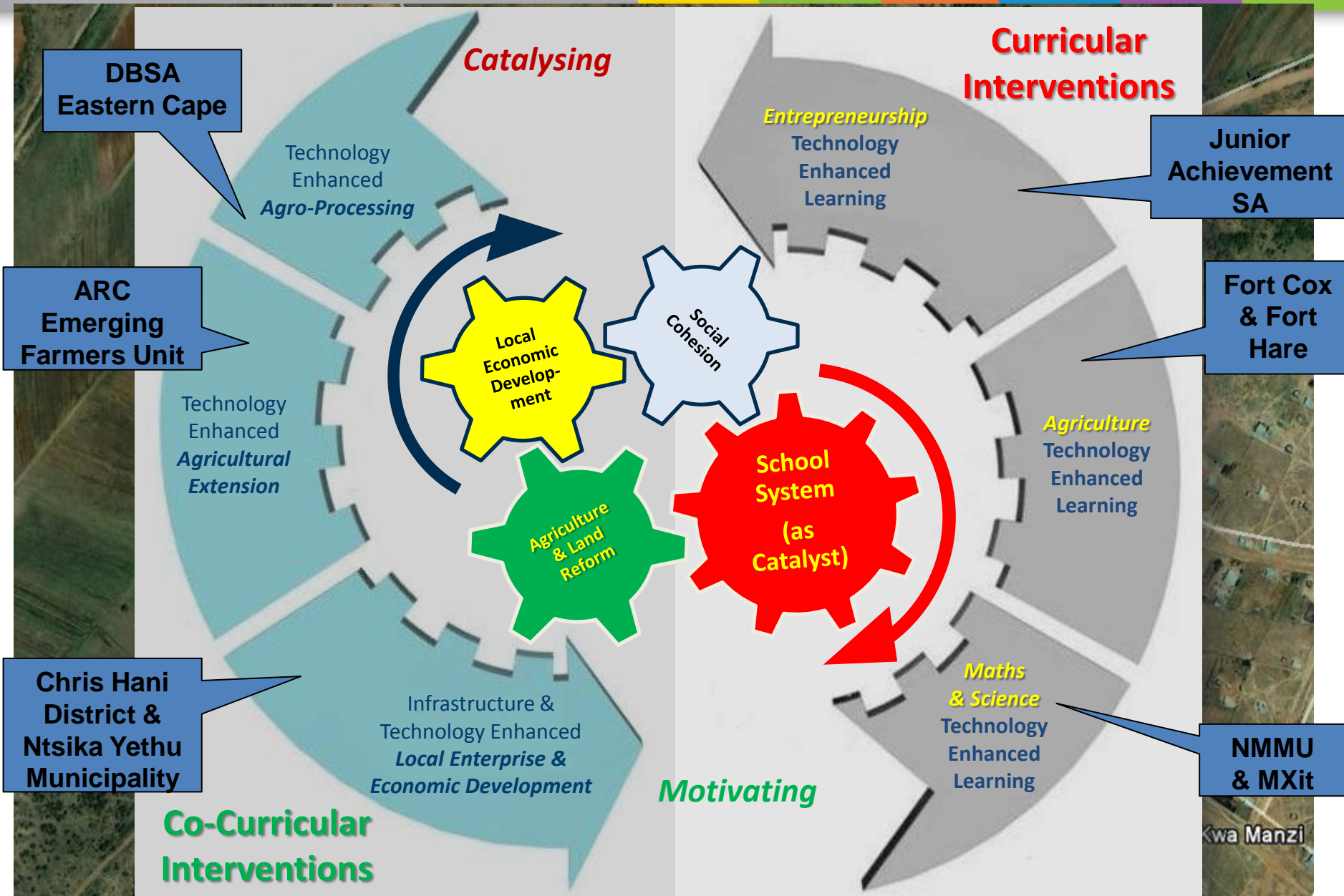
2. Why do ICT for development projects (ICT4D) fail?

- Focus on technologies;
- Failure to address adoption challenges;
- Non-sustainability (lack of technical, financial and “mindset” assets); and
- Non-integration in larger development initiatives.

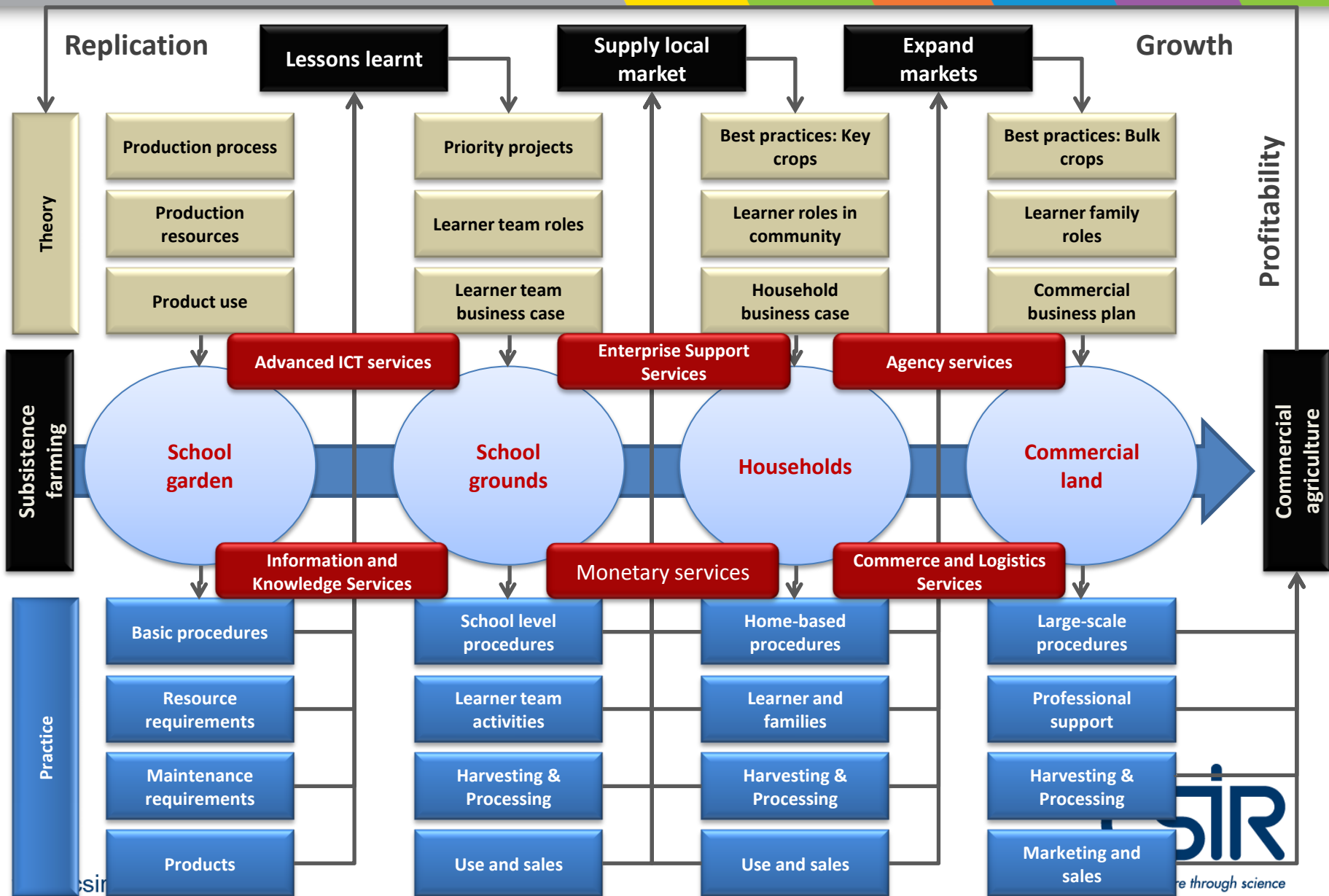
Innovation in Rural Education: Impact Areas & Strategic Focuses



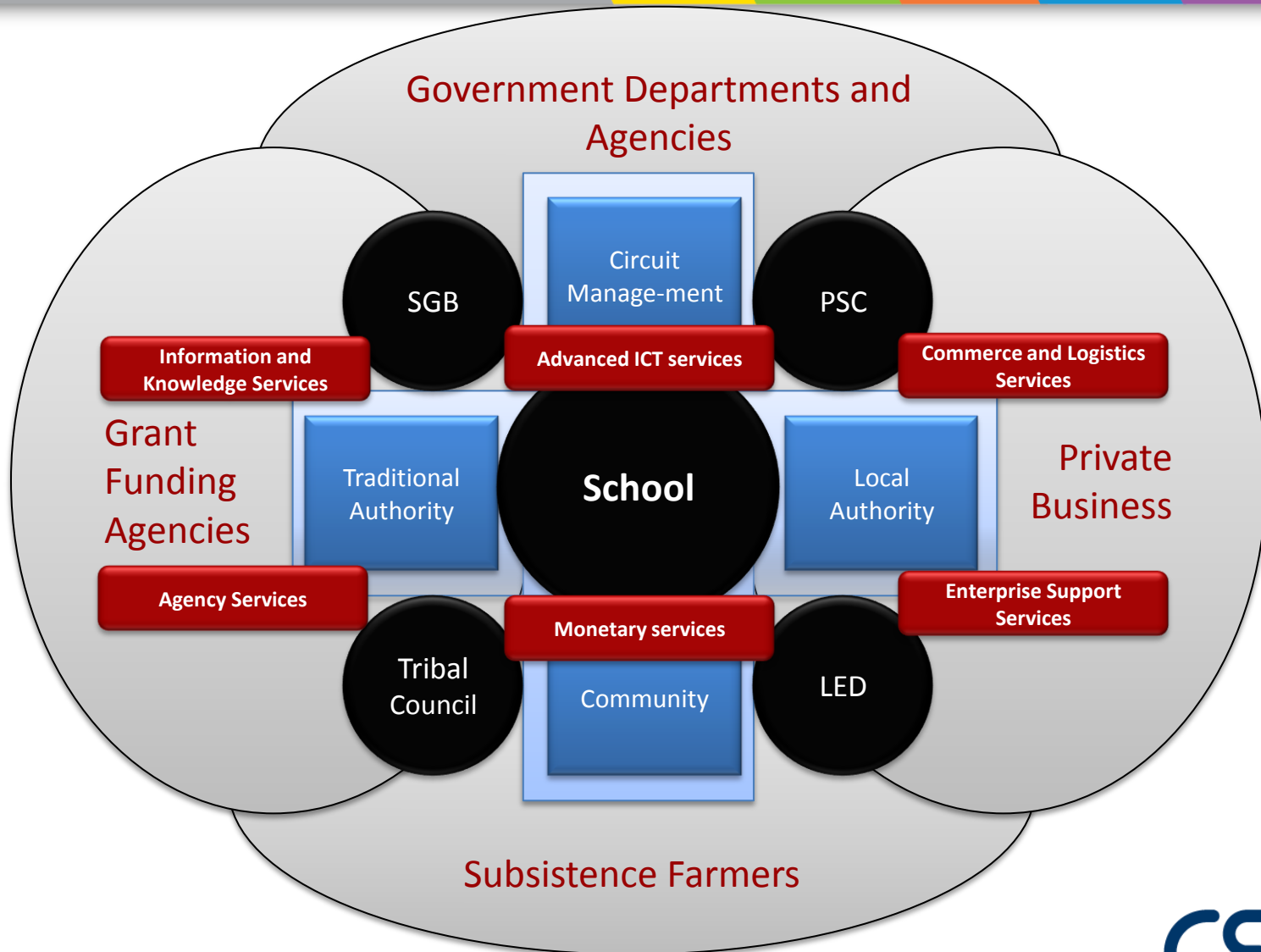
Rural Innovation & Education Systemic Approach



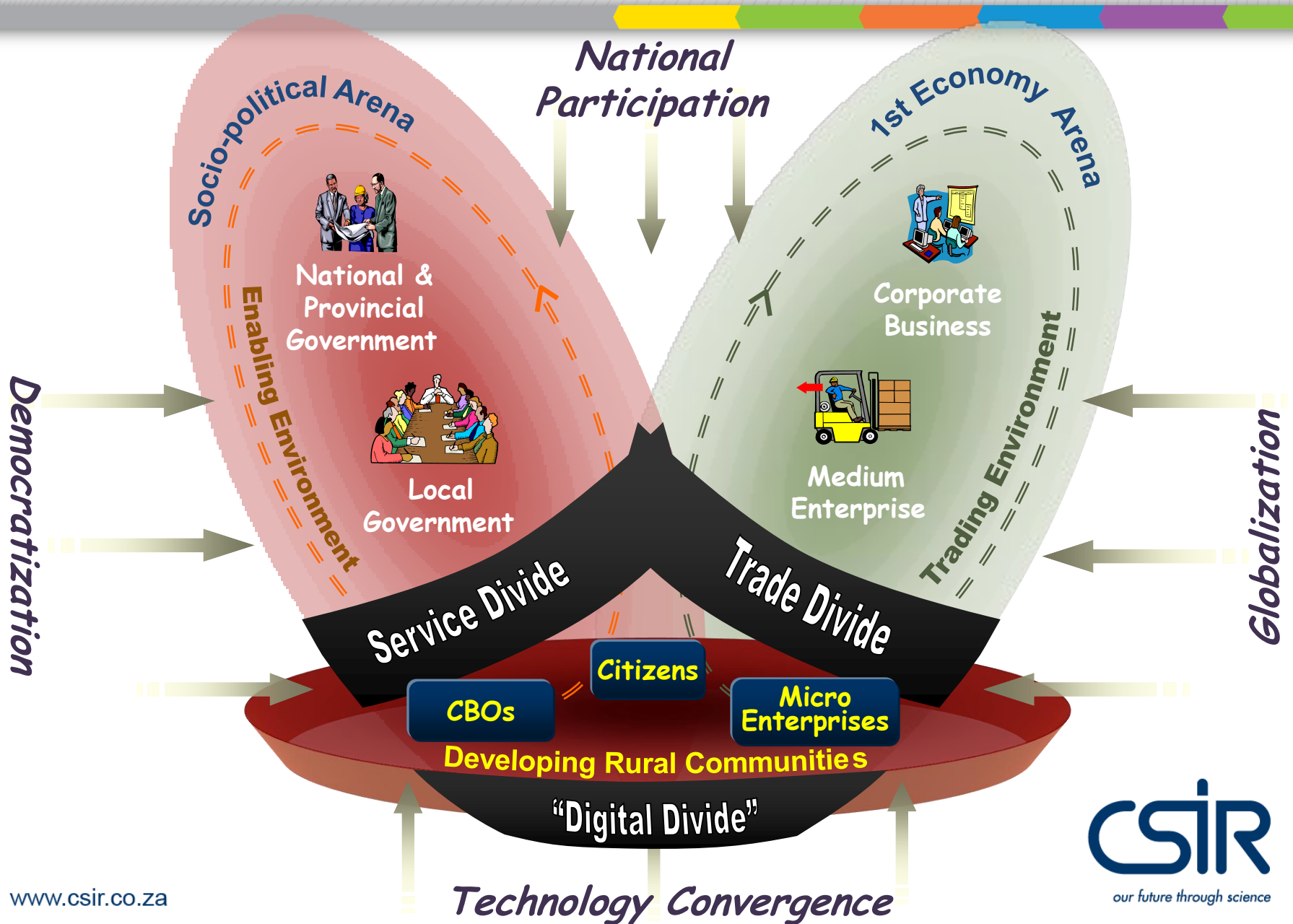
Community growth through Agri-Based Schooling & Development



Stakeholders: Mapping & Support



Challenge Space



Solution Challenges

Changing the *nature* of rural *enterprise* and *economic* development in a *way* that can ...

Prevent young talent leaving...



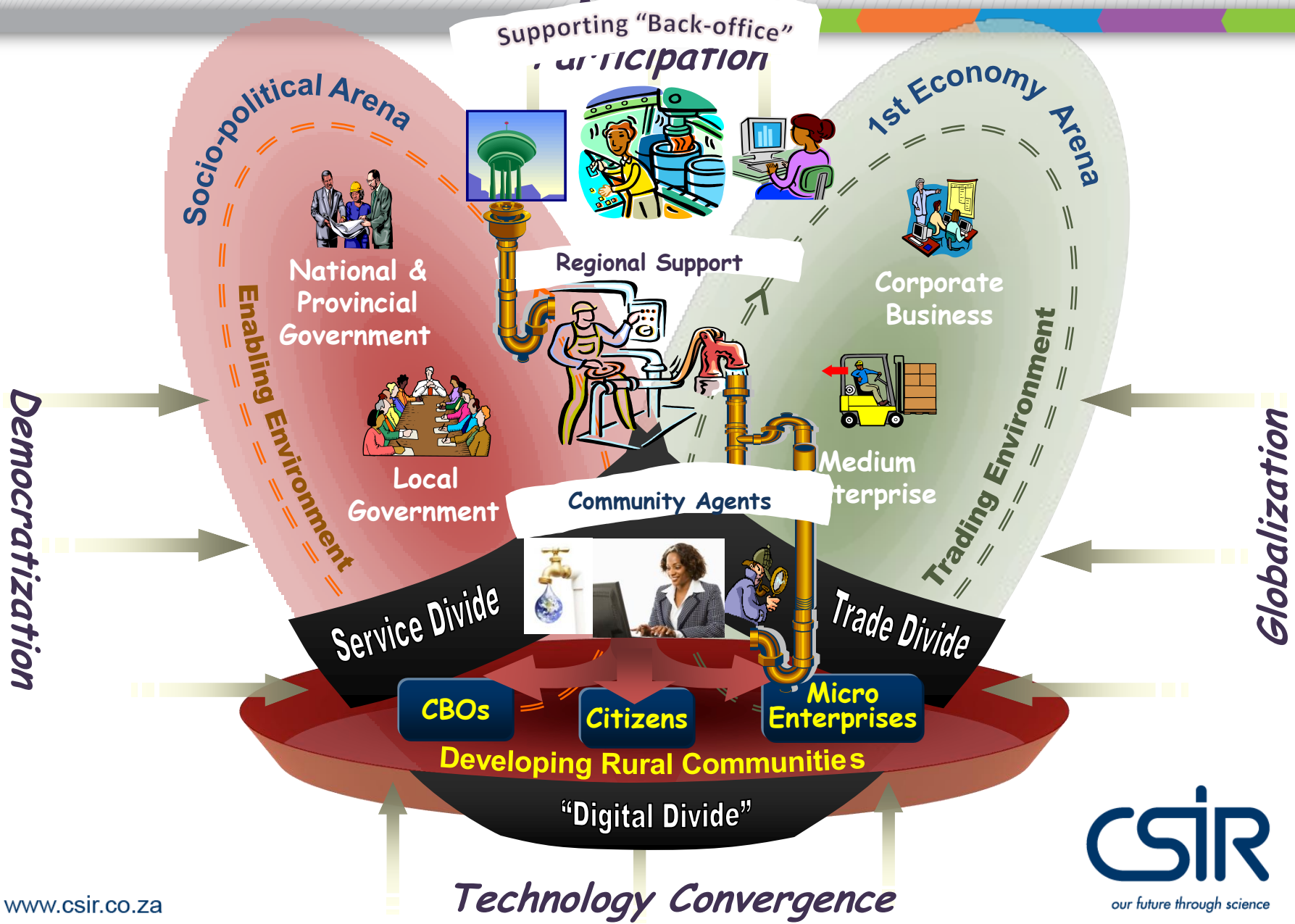
...and change cattle traffic-control...



...to a new place beyond!



Solution Components



Functional Perspective

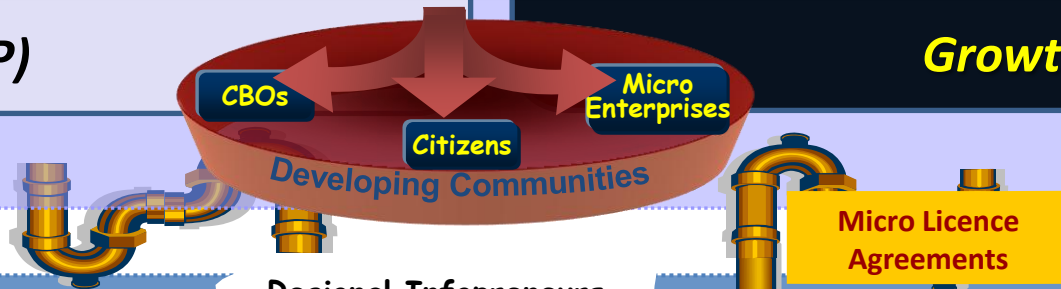
Community Infopreneurs

Advanced ICT services	Information and Knowledge Services	Monetary services	Agency Services	Commerce and Logistics Services	Enterprise Support Services
<ul style="list-style-type: none"> • Connect., etc • Skills Dev 	<ul style="list-style-type: none"> • Catalogues • Process Info 	<ul style="list-style-type: none"> • e-Banking • e-Commodities 	<ul style="list-style-type: none"> • Enter. Dev • SMME Trg 	<ul style="list-style-type: none"> • Collab. Procure, • Inventory 	<ul style="list-style-type: none"> • Enterp. Data • Buss. Promo

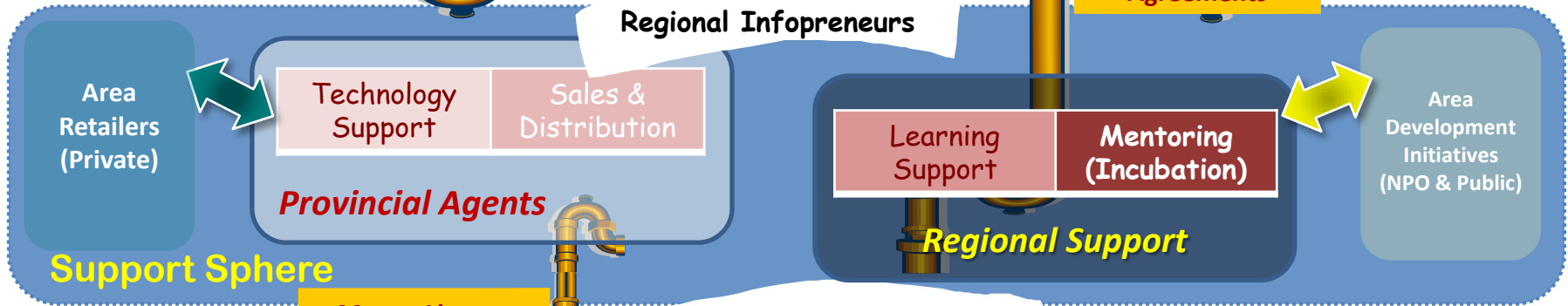
Start-up (Village IP)

Growth (Town IP)

Delivery Sphere



Regional Infopreneurs



Support Sphere

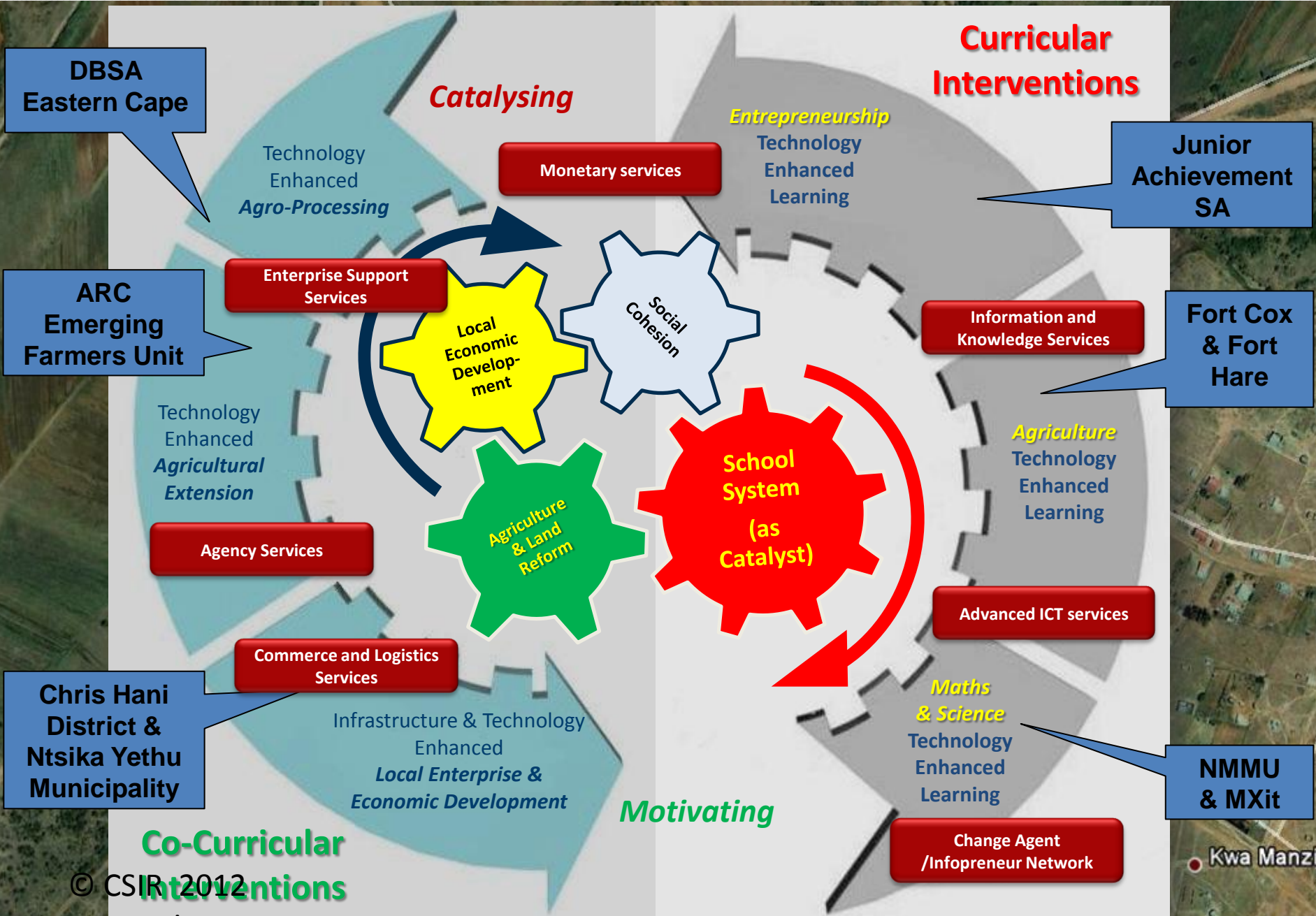
Master Licence Agreements

Supporting 'Back-Office'

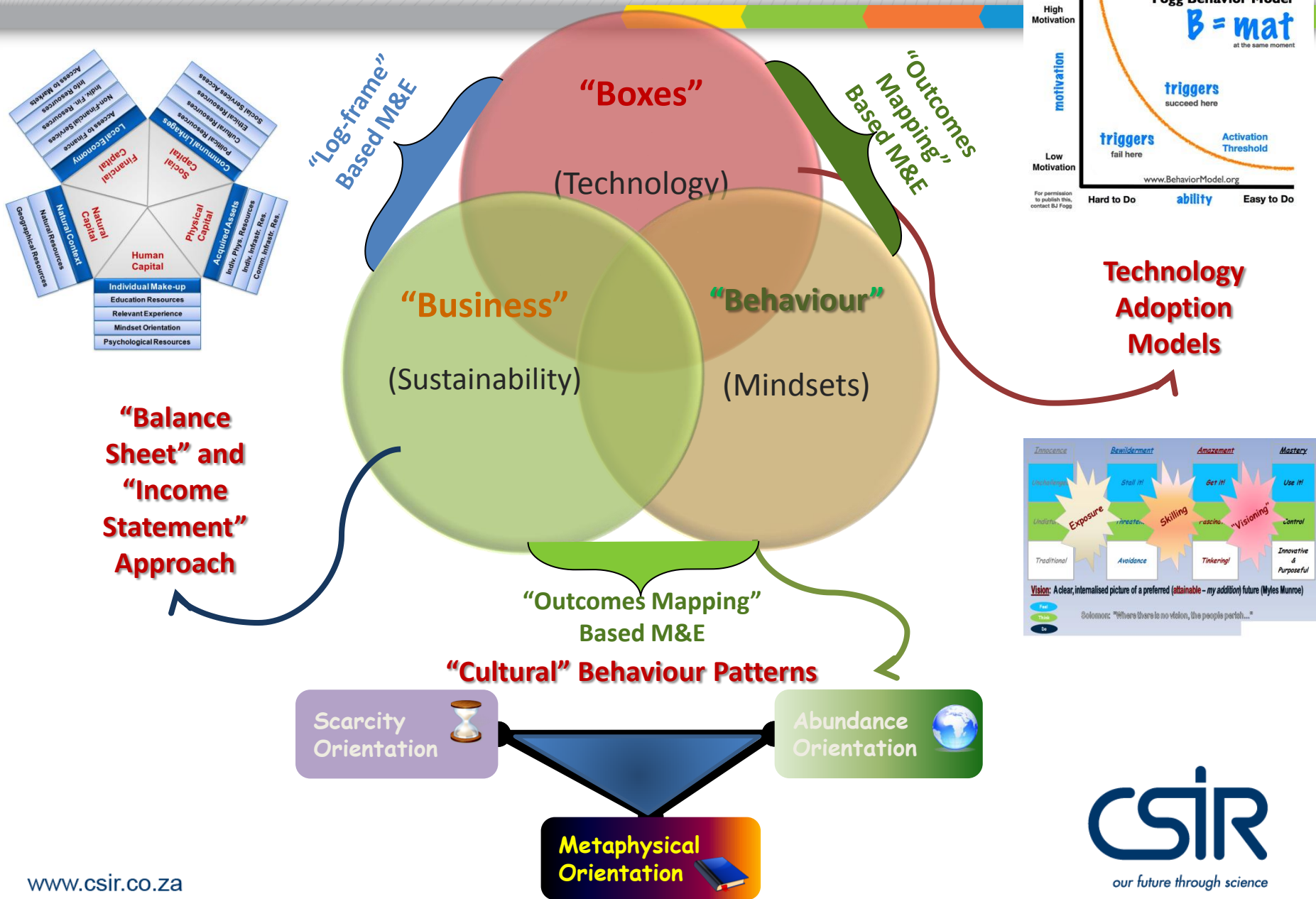


Enabling Sphere

Rural Innovation & Education System with Network Support



Measuring Tech4REED Success



Thank you

